

Action Research on Process Analysis Maps. What does an arrow mean?

Paola Mauri

Senior Consultant in System Management

ICMCI Certified Management Consultant

Star srl Italy

STPIS19



About me

- **Reliability Method and Data Analyst in a microelectronics company**
- **Practitioner on (Quality) Management System for companies with different characteristics**

**‘The story of socio-technical design
is closely allied with action
research’**

E. Mumford

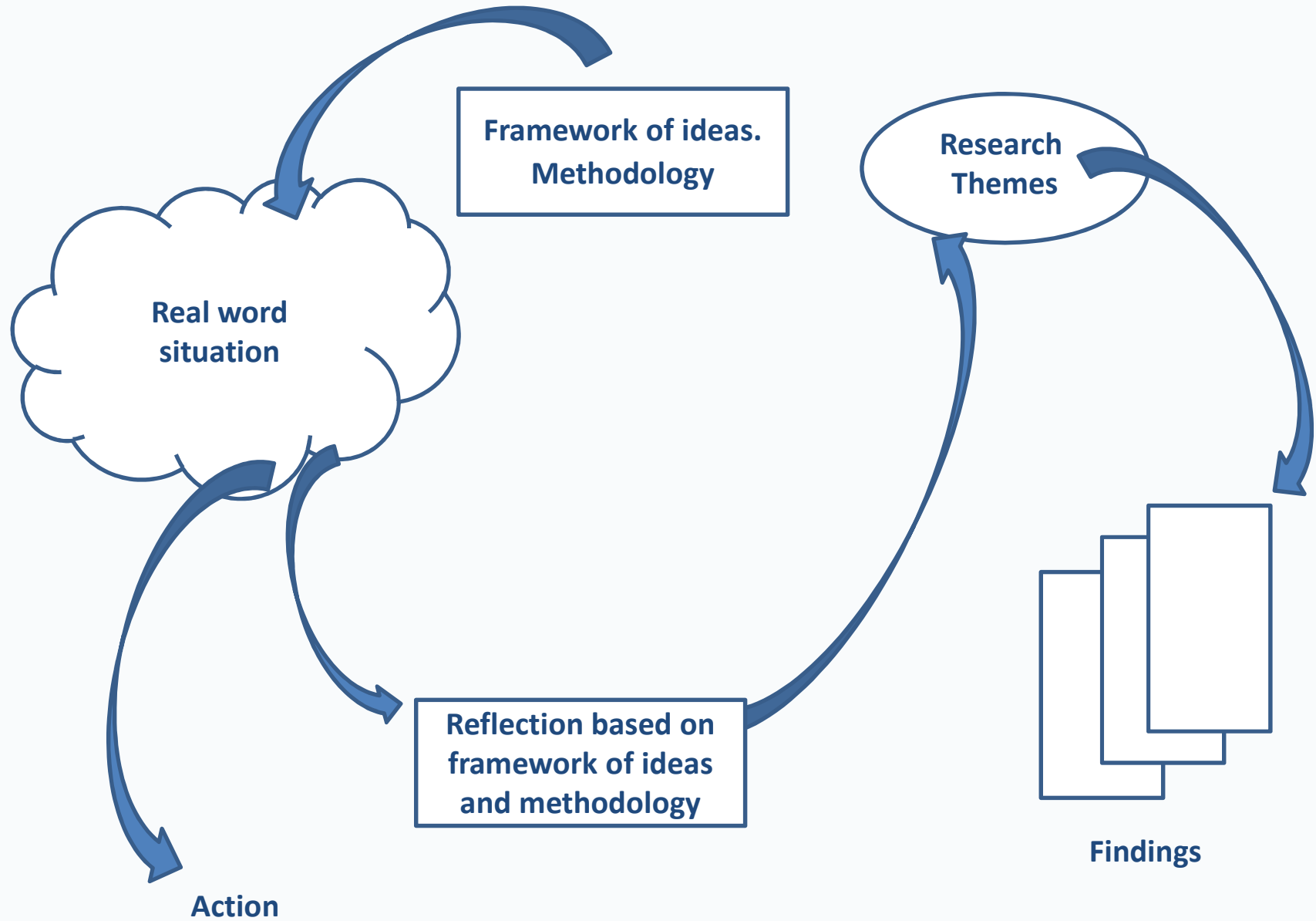
Summary

- **Action Research approach**
 - **Framework of ideas and Methodology**
 - **Real word situation: Process Analysis in Large Sized Companies**
 - **Reflection: Process Taxonomies and Notations**
 - **Research themes: Methods, Tools and Notations**
 - ***Findings***

Action Research

- The researcher is actively involved
- The knowledge obtained can be immediately applied
- The research is a cyclical process linking theory and practice

Checkland Model

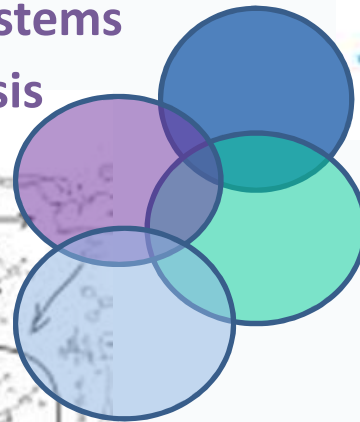


Framework of ideas. Methodology

Management Systems
Process Analysis



Socio-technical Design



Ethnographic Approach

Role of Maps

Real word situation. Large sized companies

- **Governance: Board of Directors, Business Model and Strategies**
- **Worldwide distribution of sites and markets**
- **Organizational structures: complex and subject to change**
- **ICT management: developers and end-users**

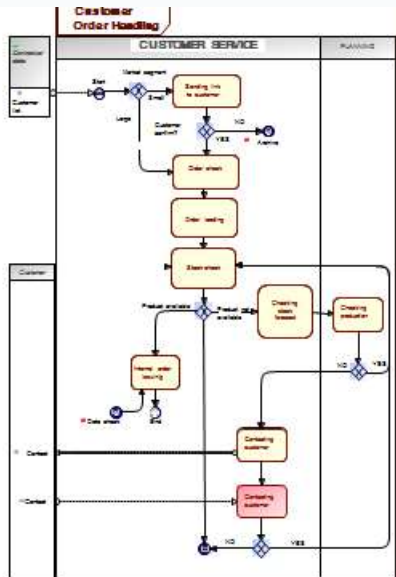
Projects and actions

- **Contractual commitment and objective: producing maps to describe processes**
- **Method: involvement of all the functions**
- **Mapping tools**

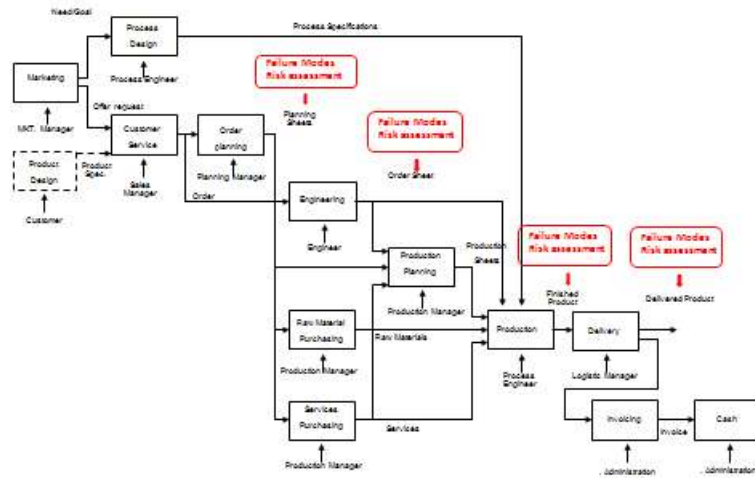
Process Description

- **Taxonomies and levels**
 - Roughly structured: Order Handling, Production, Delivery, ...
 - ISO/TS 22163 (Railway): Project Management, Configuration Management, Obsolescence Management, ...
 - APQC Process Classification Framework: Develop Vision and Strategy, Market and Sell Product, Acquire, ...
 - ERP Processes: Order Handling, ...
- **Mapping: notations and tools**

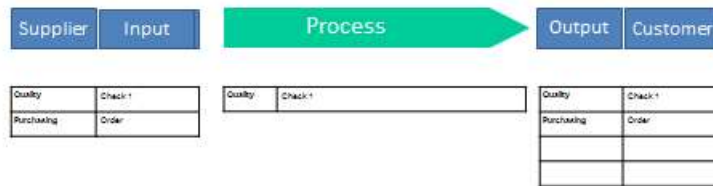
BPMN



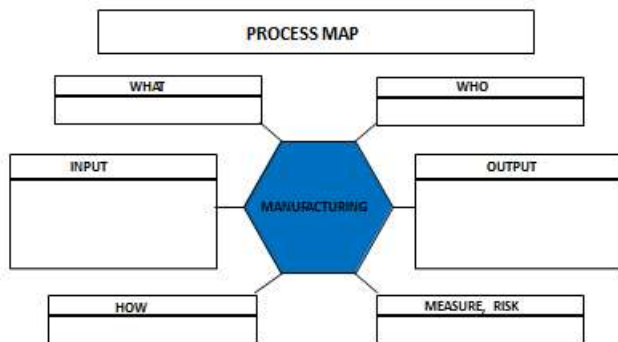
IDEFO



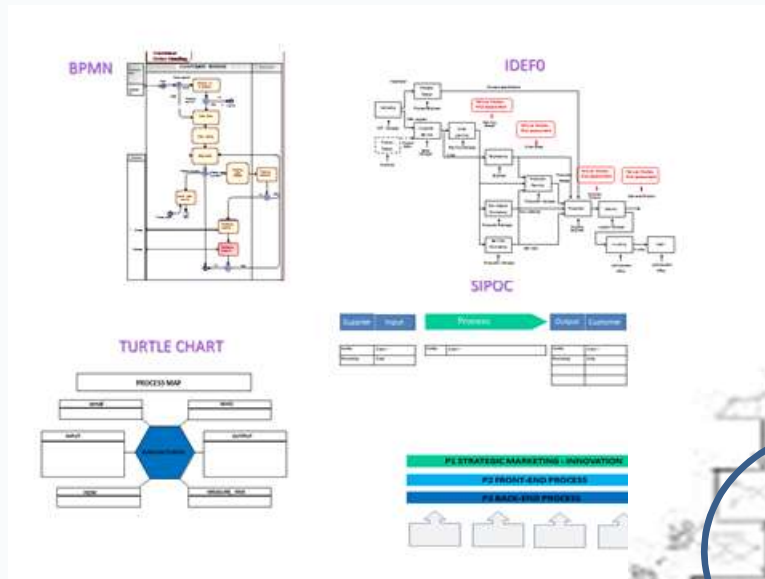
SIPOC



TURTLE CHART



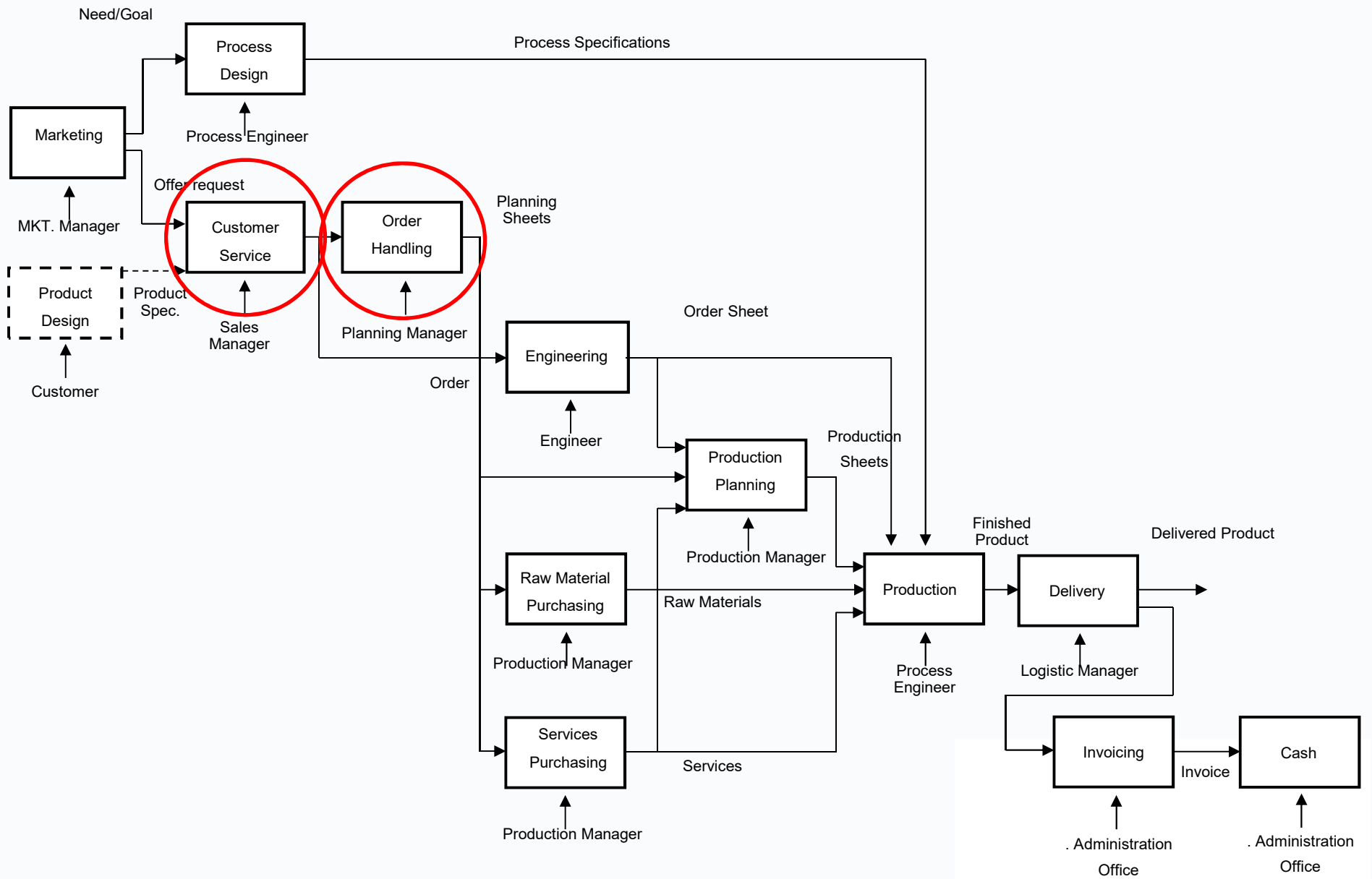
Experience



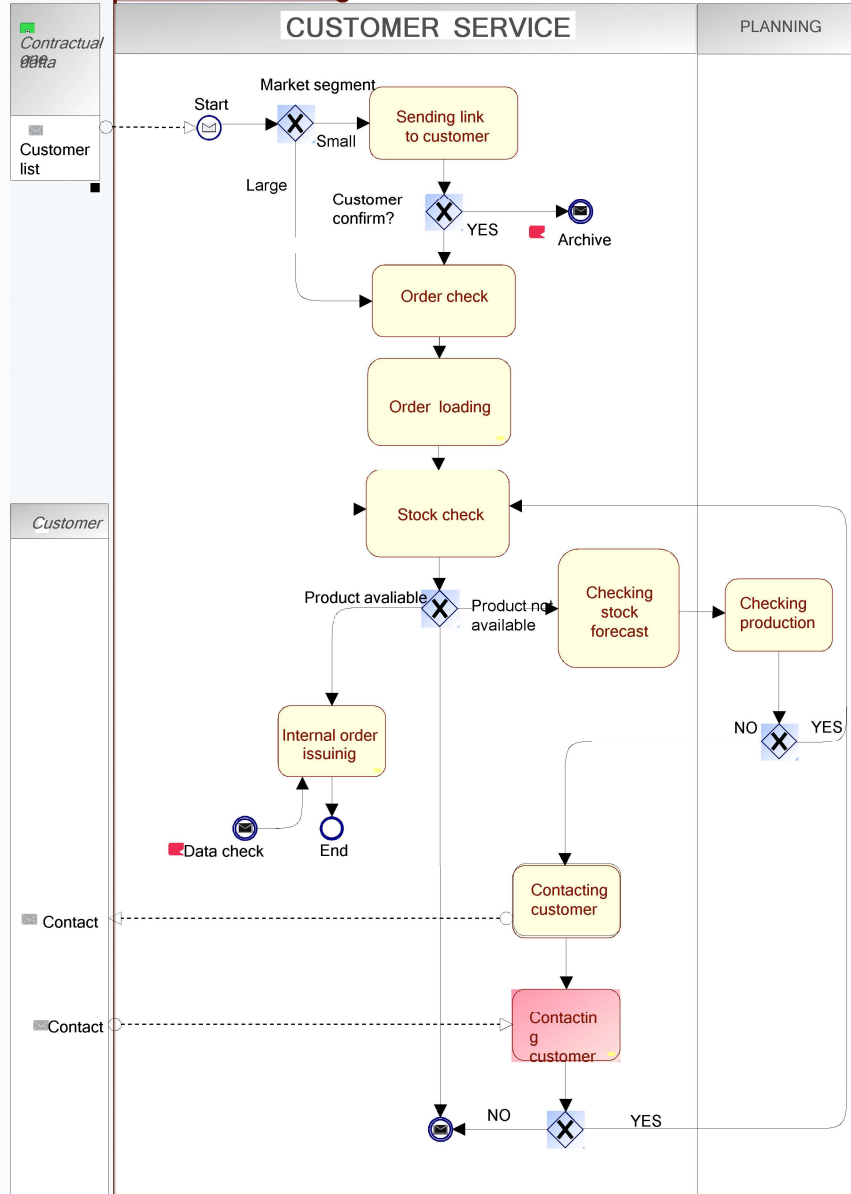
An example

Requirement of ISO 9001: Operation

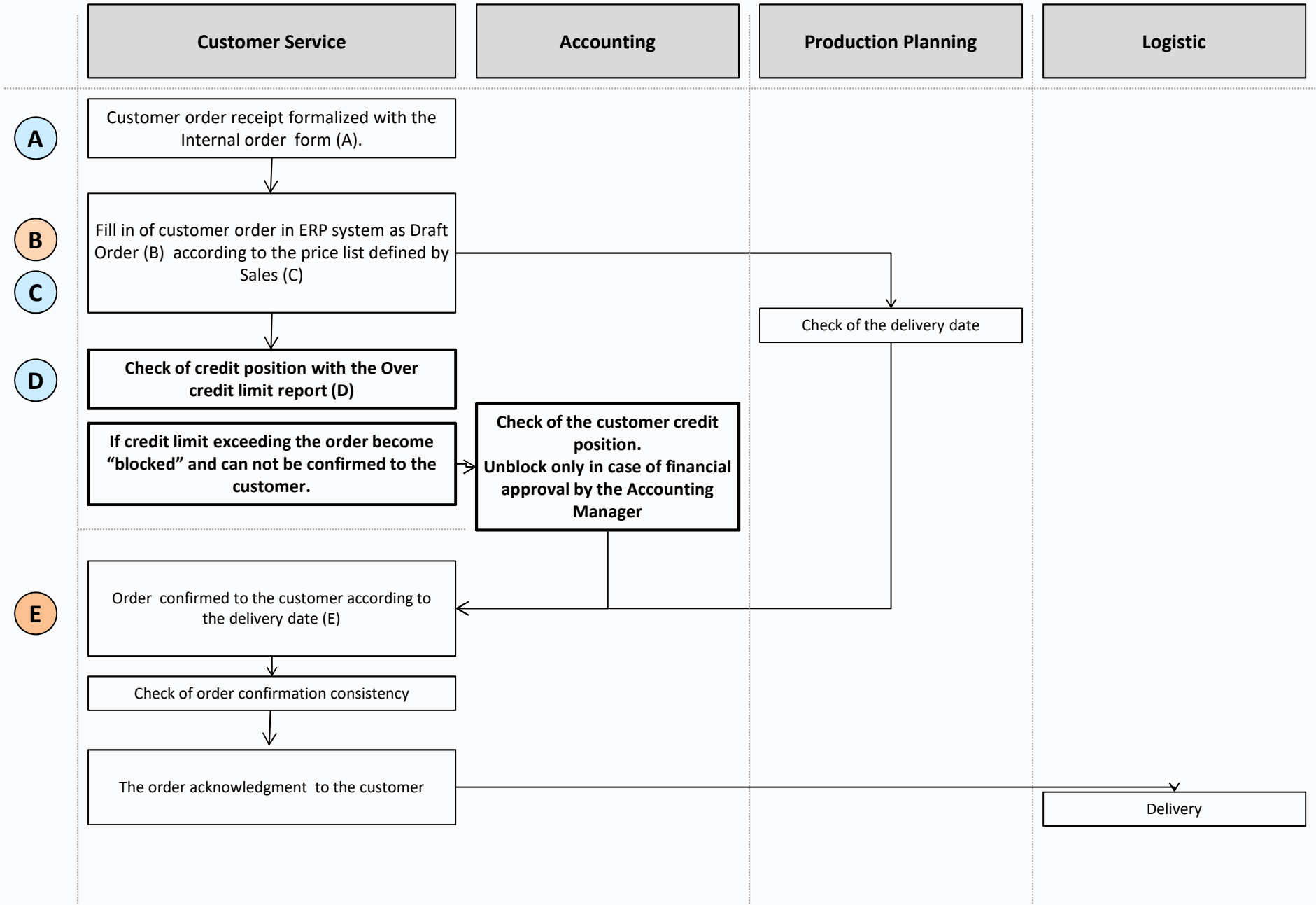
- Customer related processes
- Design
- Provision of product and services
- Production
- Delivery
- Control



Customer Order Handling



Order Handling



Results

- **Refinement of the design method**
 - Planning of meetings
 - Involvement of top management and ‘process deputies’
- **Relationships with other process analysts**
 - Controlling Area
 - *Information System Area*
- **Mapping**
 - Effective way of communication
 - *Choice and meaning of the notation*

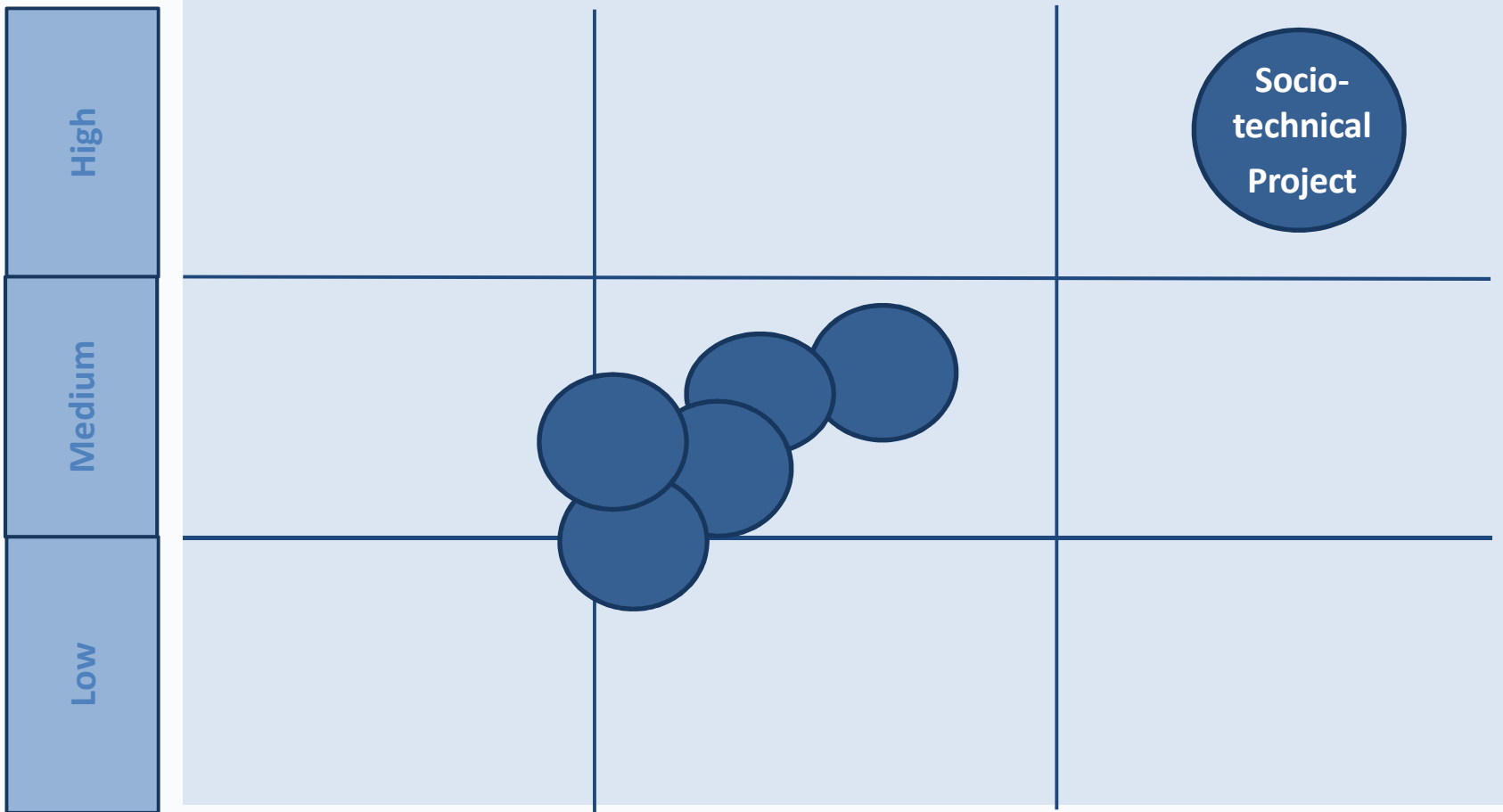
Reflections

- **Any type of graph is better than a table**
- **Drilling down the processes**
 - Several layers
 - Different points of view to describe the same process
 - No relationships, even with the same notation
- **Meaning of the graphical symbols**
 - Arrows relate to time, goal, entity

Outlook

- **(Action) Research theme**
 - Defining a method
 - Proposing a socio-technical project to my customers
 - Sharing methods and tools with IT function

Interaction



Repositories

Area Specific Systems

Supply Chain Systems

IT System

Outlook

- **Research theme**
 - **Reflecting on maps and graphical symbols: ontological dependence**
 - **Ontology versus Epistemology. How the model corresponds to the observed reality**
 - **Exploring other maps and graphical symbols**

Thank you